



nora **stairwell solutions**

**nora**<sup>®</sup>  
by **Interface**<sup>®</sup>

## nora® stairwell solutions

---

### Need tough, attractive floors that last?

**nora rubber flooring has you *and your stairs* covered.**

Whether you choose norament® stairtreads or pair nora® rubber flooring with nora stair nosings, your steps will deliver the high performance, ease of maintenance and long-lasting good looks you expect from nora. And, they'll work with other nora flooring to create a seamless flow through your facility.

### **norament stairtreads**

On angled, straight stairs, look to norament stairtreads. The all-in-one nosing, tread and riser makes installation simple and efficient. They are installed with nora® stepfix™ 240 double-sided tape—an immediate trafficking solution for an all-around fast turnover.

### **nora flooring with nora stair nosings**

For other stairwells, including spiral staircases, choose a nora stair nosing from our range of accessories to pair with your preferred noraplan® or norament® flooring.

## Contents

<b>norament stairtreads</b>	<b>2</b>
norament arago stairtreads	4
norament grano stairtreads	5
norament hammered stairtreads	8
norament round stairtreads	9
norament satura stairtreads	12
norament 920 stairtreads	13
Specifications	15
<b>nora stair accessories</b>	<b>18</b>
nora stair nosings	18
nora stairwell installation materials	19
nora visually impaired strips	20
<b>Why nora rubber flooring?</b>	<b>21</b>



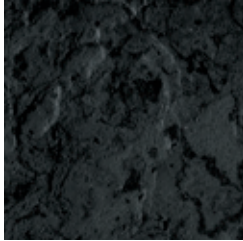
**STAIR PRODUCT** NORAMENT SATURA STAIRTREADS **COLOR** 5127 VELA  
**FLOORING PRODUCT** NORAMENT SATURA **COLOR** 5127 VELA **INSTALLED** DIRECTIONAL



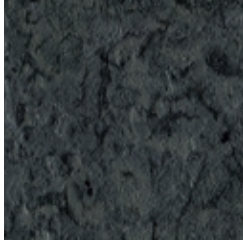
## norament® arago™ stairtreads Colorline

---

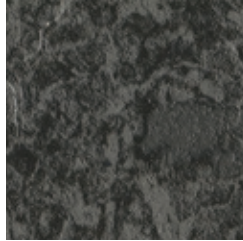
Flat, direction-oriented relief structure with fine grain design and modern marbling.



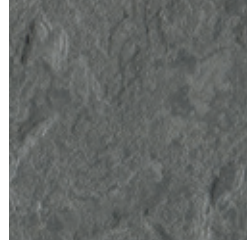
5171 FORTITUDE



5172 STAMINA



5175 UNITY



5177 BALANCE



5178 CALM

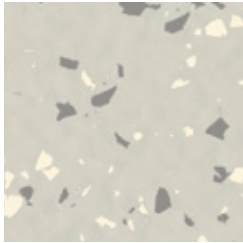


5179 TRANQUIL

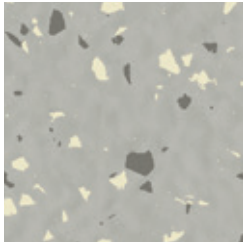
# norament® grano™ stairtreads Colorline

---

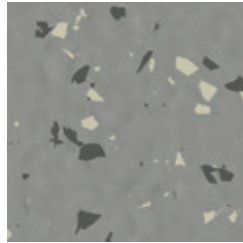
Rich, contrasting granular design with a hammered surface.



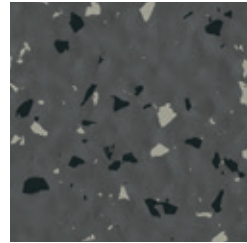
5301 WHITE FIR



5302 ANGELICA ROOT



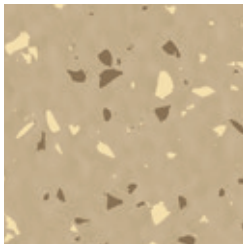
5303 FRANKINCENSE



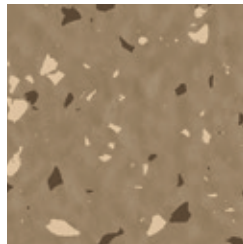
5304 BLACK PEPPER



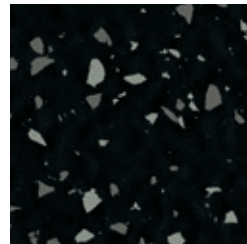
5313 MARJORAM



5314 HENNA



5315 CEDARWOOD



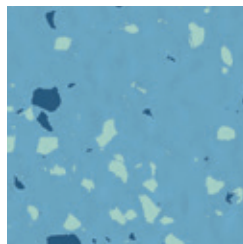
5308 MYRRH



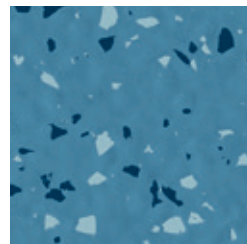
5329 BERGAMOT



5325 BALSAM



5317 AGAPANTHUS



5318 BLUE TANSY







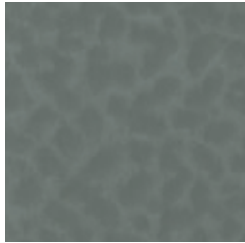
## norament® hammered stairtreads Colorline

---

Monochrome with a hammered surface.



5336 RHINO



0884 DUST GREY



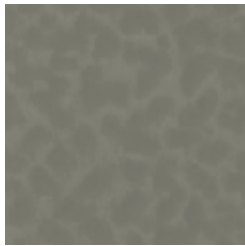
5337 ASH



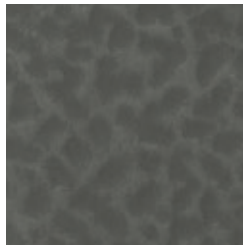
0702 BLACK



0007 ALUMINUM



0882 PLATINUM GREY



0749 STONE GREY



0716 SLATE GREY



5343 EVERGREEN



0319 SLATE BLUE



0733 STEEL BLUE

# norament® round stairtreads Colorline

---

Monochrome with a classic round pastille surface.



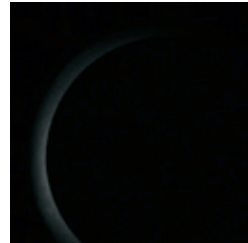
5336 RHINO



0884 DUST GREY



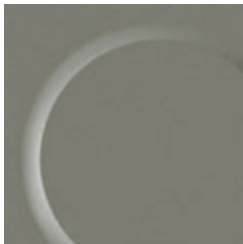
5337 ASH



0702 BLACK



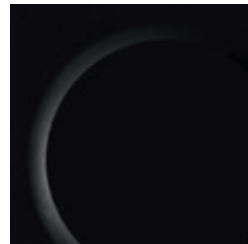
0007 ALUMINUM



0882 PLATINUM GREY



0749 STONE GREY



0716 SLATE GREY



5343 EVERGREEN



0319 SLATE BLUE



0733 STEEL BLUE



**STAIR PRODUCT** NORAMENT ROUND STAIRTREADS **COLOR** 0716 SLATE GREY  
**FLOORING PRODUCT** NORAMENT 926 ROUND **COLOR** 0716 SLATE GREY **INSTALLED** DIRECTIONAL



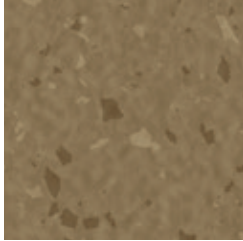
## norament<sup>®</sup> satura<sup>™</sup> stairtreads Colorline

---

Tone-in-tone granular design with a hammered surface.



5102 GRUS



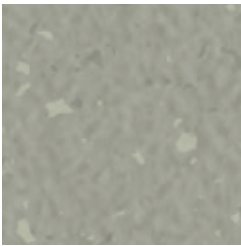
5103 MERCURY



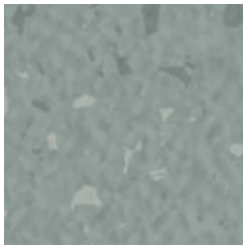
5107 CALLISTO



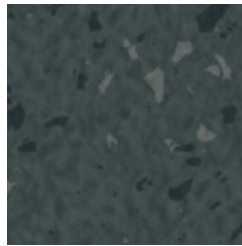
5108 INDUS



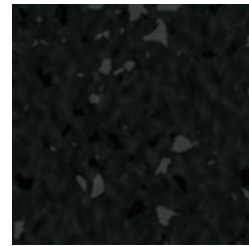
5110 ARA



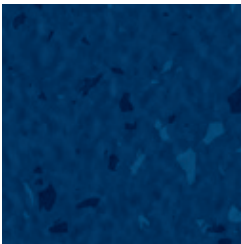
5114 CIRCINUS



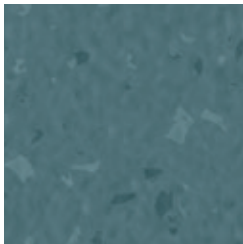
5115 HERCULES



5116 ARCTURUS



5121 HYDRA



5127 VELA

## norament® 920 stairtreads Colorline (Class A Fire-Rated)

---

Monochrome with a classic round pastille surface for special fire protection requirements.



0702 BLACK



0749 STONE GREY

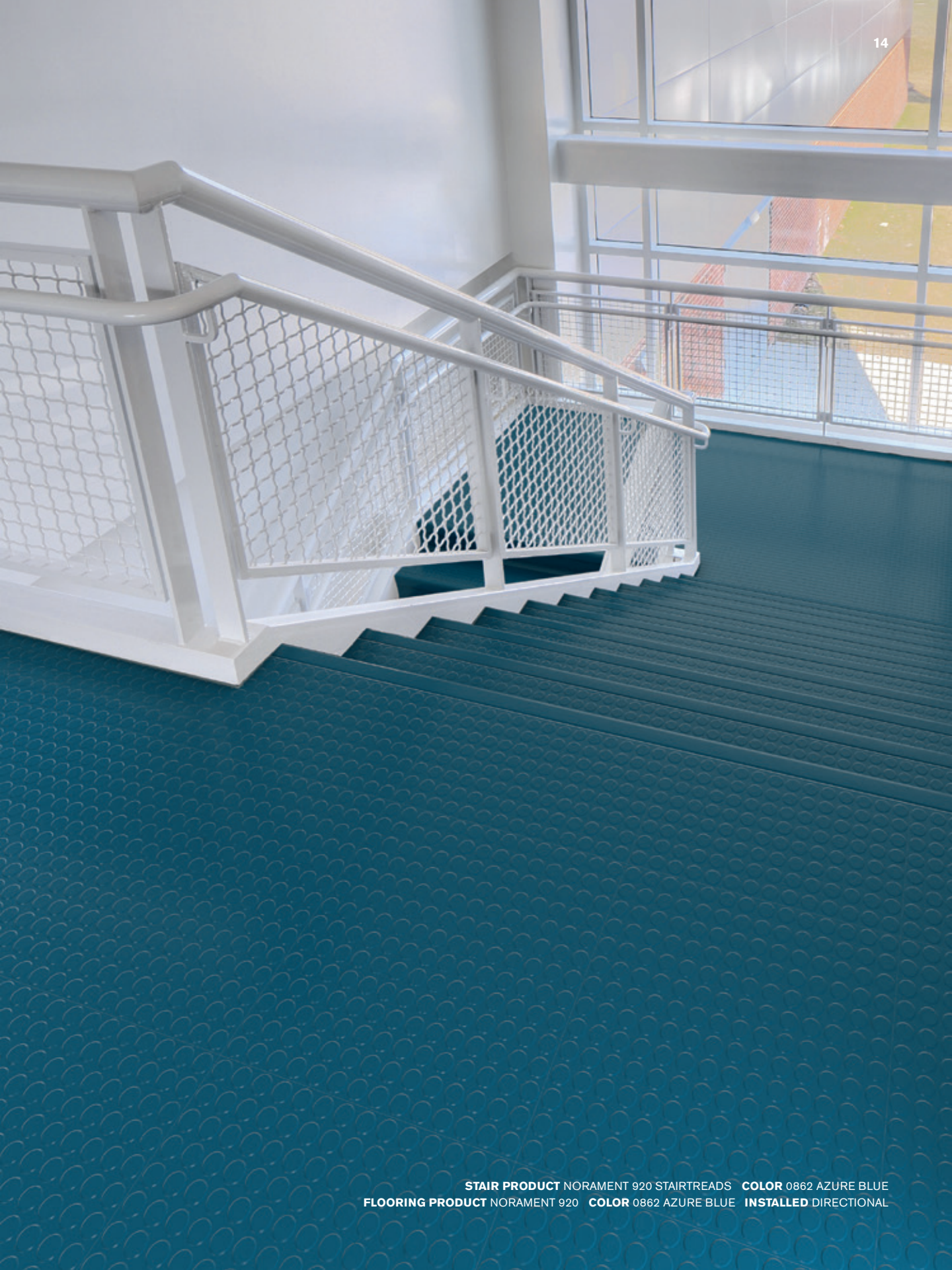


0884 DUST GREY



0862 AZURE BLUE

- Meets Class "A" (ASTM E84 Tunnel Test) with a spread rate of 15 (flame) and 300 (smoke)
- Ideal for emergency exits and stairways
- For use in egress areas above 75 feet according to International Building Code (IBC)



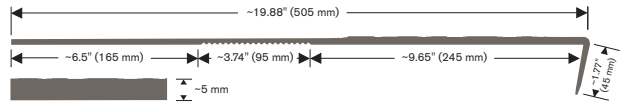
**STAIR PRODUCT** NORAMENT 920 STAIRTREADS **COLOR** 0862 AZURE BLUE  
**FLOORING PRODUCT** NORAMENT 920 **COLOR** 0862 AZURE BLUE **INSTALLED** DIRECTIONAL

## Specifications

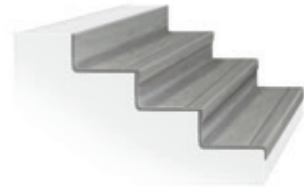
Our one-piece construction includes stair nosing, riser and tread and is built to fit straight steps with an angled edge. norament stairtreads are designed to withstand extremely heavy traffic while maintaining their good looks.

### norament arago stairtreads

Art. 3170 - width ~50.59" (1285 mm)  
 Art. 3171 - width ~63.54" (1614 mm)  
 Art. 3172 - width ~78.89" (2004 mm)

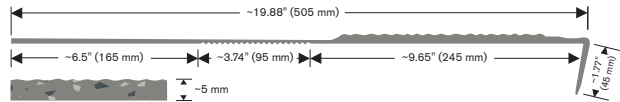


Product Construction	Homogeneous Rubber Stair Tread
Class / ASTM F2169	Type TS, Class 2, Group 1 and/or 2, Grade 2
Surface Type	Relief Structure and Smooth
Indoor Air Quality	GREENGUARD Gold CDPH 01350 Compliant
Full Life Cycle Carbon Emissions	Carbon Neutral Floors™
LEED v4	Contributes to multiple IEQ and MR credits



### norament grano stairtreads

Art. 479 - width ~50.59" (1285 mm)  
 Art. 468 - width ~63.54" (1614 mm)  
 Art. 469 - width ~78.89" (2004 mm)

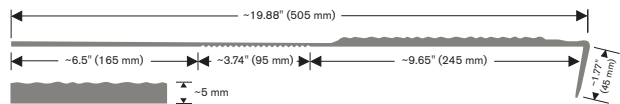


Product Construction	Homogeneous Rubber Stair Tread
Class / ASTM F2169	Type TS, Class 2, Group 1 and/or 2, Grade 2
Surface Type	Hammered and Smooth
Indoor Air Quality	GREENGUARD Gold CDPH 01350 Compliant
Full Life Cycle Carbon Emissions	Carbon Neutral Floors™
LEED v4	Contributes to multiple IEQ and MR credits

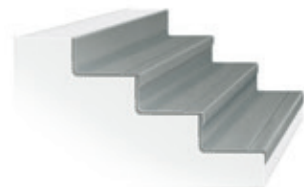


### norament hammered stairtreads

Art. 479 - width ~50.59" (1285 mm)  
 Art. 468 - width ~63.54" (1614 mm)  
 Art. 469 - width ~78.89" (2004 mm)




Product Construction	Homogeneous Rubber Stair Tread
Class / ASTM F2169	Type TS, Class 2, Group 1 and/or 2, Grade 2
Surface Type	Hammered and Smooth
Indoor Air Quality	GREENGUARD Gold CDPH 01350 Compliant
Full Life Cycle Carbon Emissions	Carbon Neutral Floors™
LEED v4	Contributes to multiple IEQ and MR credits

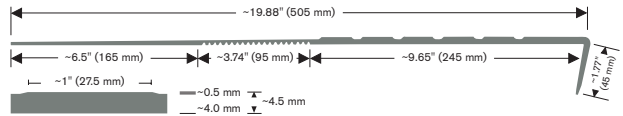




# Specifications

## norament round stairtreads


-  11
- Art. 465** - width ~50.59" (1285 mm)
- Art. 466** - width ~63.54" (1614 mm)
- Art. 467** - width ~78.89" (2004 mm)

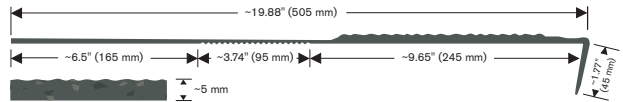


Product Construction	Homogeneous Rubber Stair Tread
Class / ASTM F2169	Type TS, Class 2, Group 1 and/or 2, Grade 4
Surface Type	Round Pastille and Smooth
Indoor Air Quality	GREENGUARD Gold CDPH 01350 Compliant
Full Life Cycle Carbon Emissions	Carbon Neutral Floors™
LEED v4	Contributes to multiple IEQ and MR credits



## norament satira stairtreads

-  10
- Art. 479** - width ~50.59" (1285 mm)
- Art. 468** - width ~63.54" (1614 mm)
- Art. 469** - width ~78.89" (2004 mm)

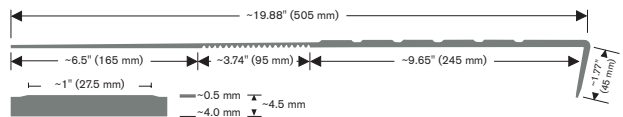


Product Construction	Homogeneous Rubber Stair Tread
Class / ASTM F2169	Type TS, Class 2, Group 1 and/or 2, Grade 2
Surface Type	Hammered and Smooth
Indoor Air Quality	GREENGUARD Gold CDPH 01350 Compliant
Full Life Cycle Carbon Emissions	Carbon Neutral Floors™
LEED v4	Contributes to multiple IEQ and MR credits

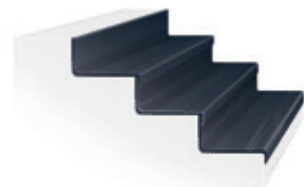


## norament 920 stairtreads

-  4
- Art. 465** - width ~50.59" (1285 mm)



Product Construction	Homogeneous Rubber Stair Tread
Class / ASTM F2169	Type TS, Class 2, Group 1 and/or 2, Grade 4
Surface Type	Round Pastille and Smooth
Indoor Air Quality	GREENGUARD Gold CDPH 01350 Compliant
Full Life Cycle Carbon Emissions	Carbon Neutral Floors™
LEED v4	Contributes to IEQ credits



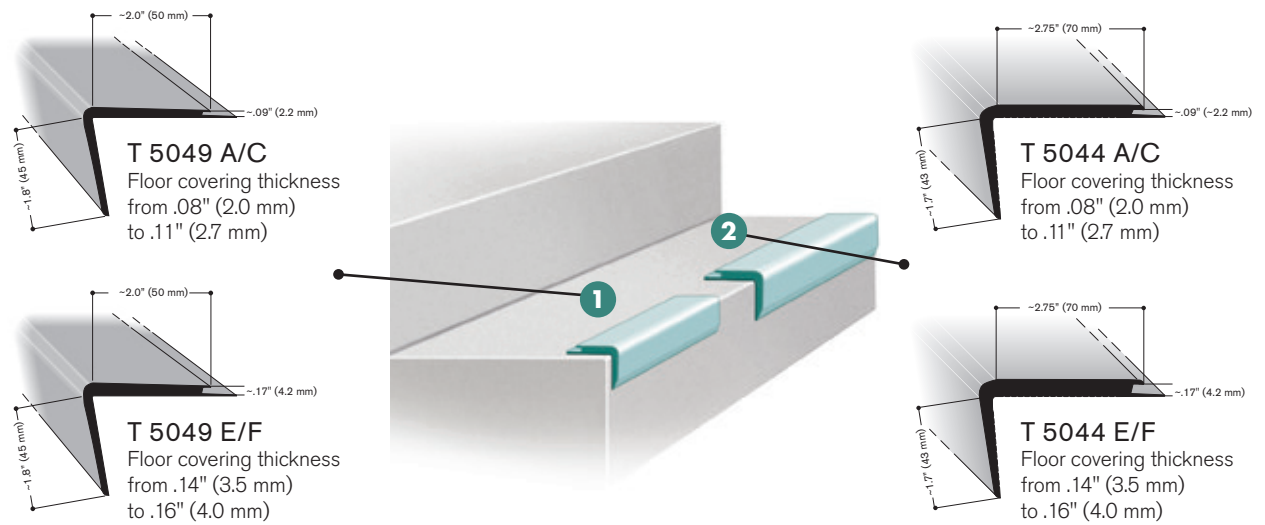


## nora stair accessories

### nora flooring with stair nosings

Bring the full repertoire of nora floor coverings to more types of stairs, including specialty stairs like spiral staircases, by pairing nora stair nosings with nora flooring.

nora stair nosings are designed for multiple flooring thicknesses and can be used on noraplan or norament floor coverings. Once the flooring is pre-cut to the dimension of an individual stair tread, the nora stair nosing insertion lip locks the flooring into place and protects the cut edge. And, nora stair nosings are both impact and shock resistant.



### Standard colors:



0702



0716



0749



0884



5301



5305



5310



6179

### nora stair nosing



Art. 805 – T 5049

Art. 802 – T 5044

Piece Length: ~8.2' (2.5 m)

For use on noraplan and norament floor coverings.

## nora stair accessories (continued)

---

### nora stepfix 240

nora stepfix 240 is an innovative and cost-effective adhesive tape suitable for new builds and renovation projects. Specifically designed for norament stairtreads, nora stepfix 240 makes installation 3-5 times faster than conventional installation methods, and the process is odorless, clean, and easy.

You can dry-fit the tread right on the covered adhesive tape, and stairs can be walked on immediately after installation. And nora stepfix 240 is GREENGUARD Gold certified for low VOC emissions, helping to improve indoor air quality.



Art. 907

Dimension of rolls: ~9.45" width x 164' length (240 mm x 50 m) = ~129 square feet (12 m<sup>2</sup>)

### nora epoxy stair filler

A solvent-free, non-flammable, high-performance epoxy that sets to a hard, permanent bond. Use on stairs with greater than 1/4" radius or damaged edges to provide support under the stairtread nosing. Required for nora visually impaired strips.

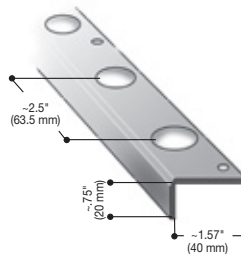


Art. 500875

- 13.5 oz dual cartridge applicator with special mixer application tip
- Two cartridge caulking gun required
- Coverage: ~40 linear feet with a .25" bead

### nora metal repair stair angle

Prep rounded, wavy, damaged or bowed steps with the nora metal repair stair angle prior to installing nora stairwell products.



Art. 6637

Piece Length: ~39.37" (1.0 m)

- Screws: middle of hole to middle of hole  
~2.5" (63.5 mm)

On stairs with round nosing, nora metal repair stair angle and/or nora epoxy stair filler must be used to fill the void.

## nora visually impaired strips

---

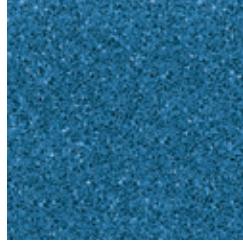
norament stairtreads and nora stair nosings can be equipped with a range of nora visually impaired strips to guide users or mark the edge of stairs in areas with safety or accessibility concerns. Inserts are offered in textured or smooth surfaces and high-contrast colors. A photoluminescent option is also available on request.



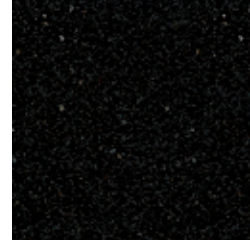
SAFETY YELLOW



CORAL RED



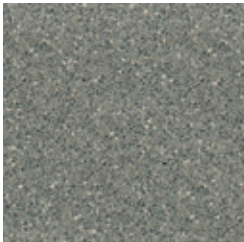
BOARDWALK BLUE



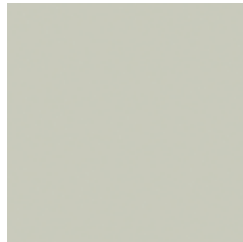
BLACK



NITE GLOW



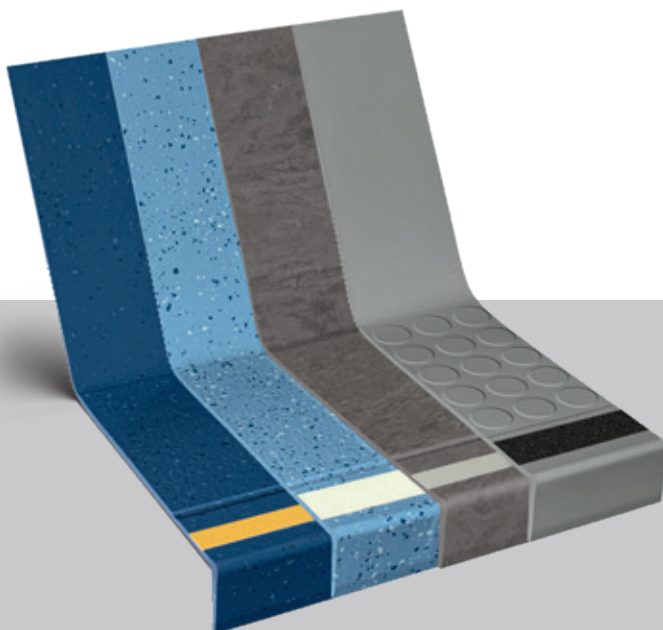
OCEAN GREY



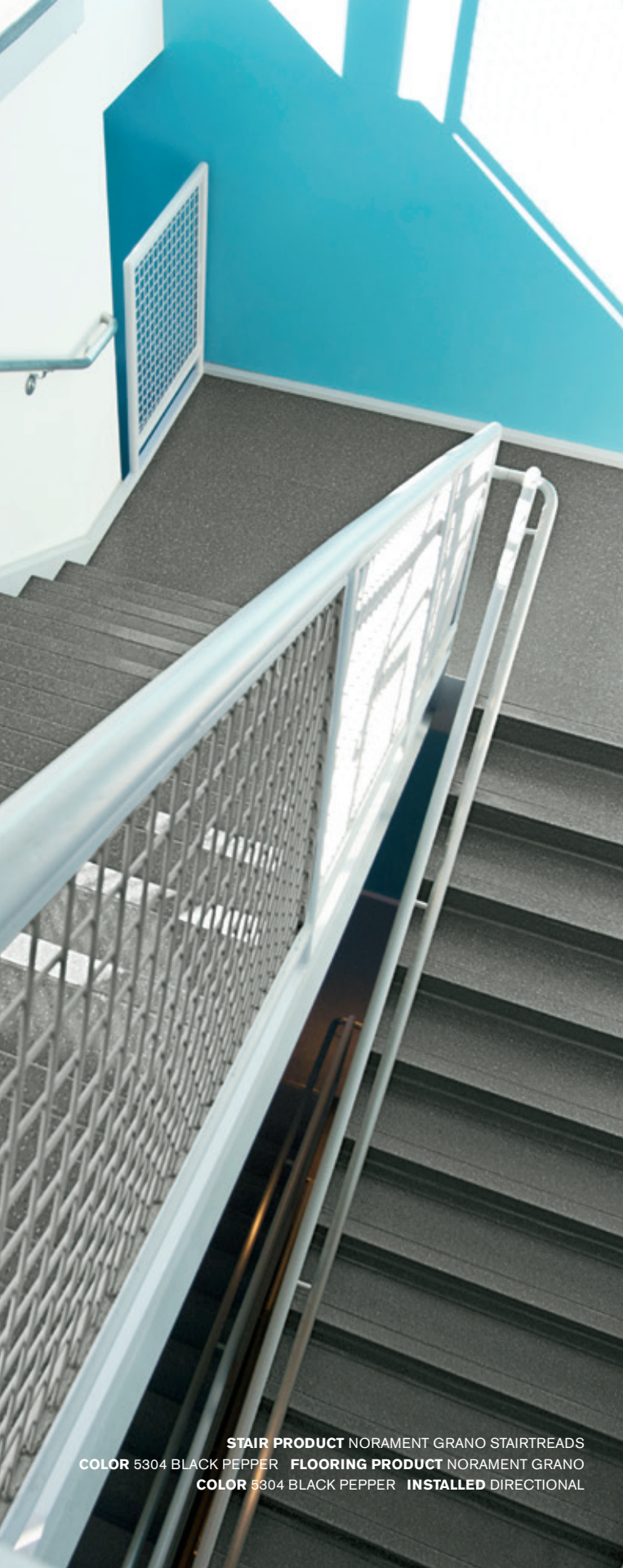
0122



0895



To ensure safety and performance, nora epoxy stair filler is used under the nosing of stairtreads with nora visually impaired strips at installation.

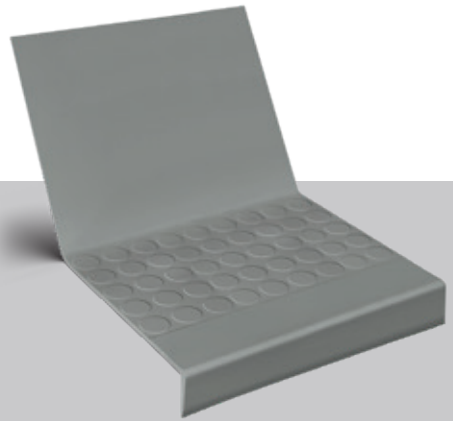


Why nora® rubber flooring?

---

### nora Stairwell Solutions

Whether you choose norament stairtreads or pair nora floor coverings with stair nosings, rest easy knowing you have the high performance of nora rubber on your stairs.



#### norament stairtreads

In addition to the key benefits of all nora rubber flooring, norament stairtreads also offer:

- Installation efficiency of a pre-shaped stair nosing, riser and tread all-in-one piece and immediate trafficking with nora stepfix 240
- Pre-sanded backs
- Good for very heavy traffic
- High fire-retardant properties
- Visually impaired and photoluminescent strips for accessibility
- 15-year limited wear warranty\*

**STAIR PRODUCT** NORAMENT GRANO STAIRTREADS  
**COLOR** 5304 BLACK PEPPER **FLOORING PRODUCT** NORAMENT GRANO  
**COLOR** 5304 BLACK PEPPER **INSTALLED** DIRECTIONAL

## Why nora® rubber flooring?



### Reduced Maintenance

Little more than water needed - no finishes, coatings or harsh chemicals necessary.



### Quiet Acoustical Performance

Attenuate noise pollution.



### Durable Surface

Withstand extreme stress from heavy rolling loads and wheeled traffic.



### Ergonomic Design

Add comfort underfoot, reducing foot and leg pain.



### Superior Slip Resistance

Help to create safer spaces.



### Supports Infection Control

Disinfect completely due to a dense, non-porous surface.



### Cradle to Cradle Silver\*\*

Certification of whether a product is safe, circular and responsibly made.



### Carbon Neutral Floors™

Third-party verified carbon neutral throughout its entire life cycle as part of Interface's Carbon Neutral Floors program. Learn more at [interface.com/carbonneutral](http://interface.com/carbonneutral)



### GREENGUARD Gold

Certified low VOC emissions.

## Integrated system

nora and Interface cover every area of your building – all from a single source. Create harmonious, space-specific design with our system of soft and resilient floor coverings, including special floorings, stairtreads and accessories.

## Outstanding service

From design to post-installation, we have the experts to support your project at every step and can even be a valued resource for your organization's sustainability mission.

For additional information regarding usage in recommended applications, contact us or visit [nora.com](http://nora.com).

### ORDER SAMPLES

Online at [www.nora.com](http://www.nora.com)  
Call 1.800.332.NORA  
Email your sales rep or customer support specialist

### BROWSE NORA.COM

- Design your floor with Interior Design Studio
- Find technical and environmental documents
- Access BIM/Revit Files

\*\*Cradle to Cradle not available for norament 920 stairtreads

## \*Product warranty

We will be happy to supply specific test results on all nora systems, Inc. products.

### nora® by Interface®

#### Product Warranty – Americas (Excerpt)

nora systems, Inc. (nora) warrants the following nora® brand products (collectively, the "Warranted nora Brand Flooring Products") as set forth below: norament® and noraplan® rubber flooring, norament rubber stairtread (excluding visually impaired strips), accessories (excluding visually impaired strips), nora® nTx™ 020 bond enhancer and adhesives, and the conductivity of its Electrostatic Dissipative ("ESD") flooring system (norament ed and noraplan ed flooring and adhesive).

This limited warranty and the applicable Installation Instructions and Maintenance Guidelines are subject to change at nora's discretion and without notice. Please contact nora or visit the [nora.com](http://nora.com) website for the latest versions. For additional information regarding usage in recommended applications, please refer to [www.nora.com](http://www.nora.com) or call 1-800-332-NORA. Warranty periods commence on the date of invoice of the product to the original end-use customer.



**RECYCLED**  
Paper made from  
recycled material  
**FSC® C009723**



PLEASE RECYCLE

Printed on 100% post consumer waste (PCW)  
fiber manufactured using wind power.

Errors as well as misprints and changes reserved. No guarantee is given for the accuracy and completeness of the information. The product images in this document may differ from the original. This document is not a contractual offer and only serves to provide non-binding information.

The nora brand and all other registered trademarks used in this document are registered to nora systems GmbH or its affiliates or subsidiaries. Other labels used here are trademarks of their respective owners.

**nora systems, Inc.**  
9 Northeastern Blvd.  
Salem, NH 03079  
T: 800.332.NORA  
T: 603.894.1021  
info-us@nora.com  
www.nora.com